

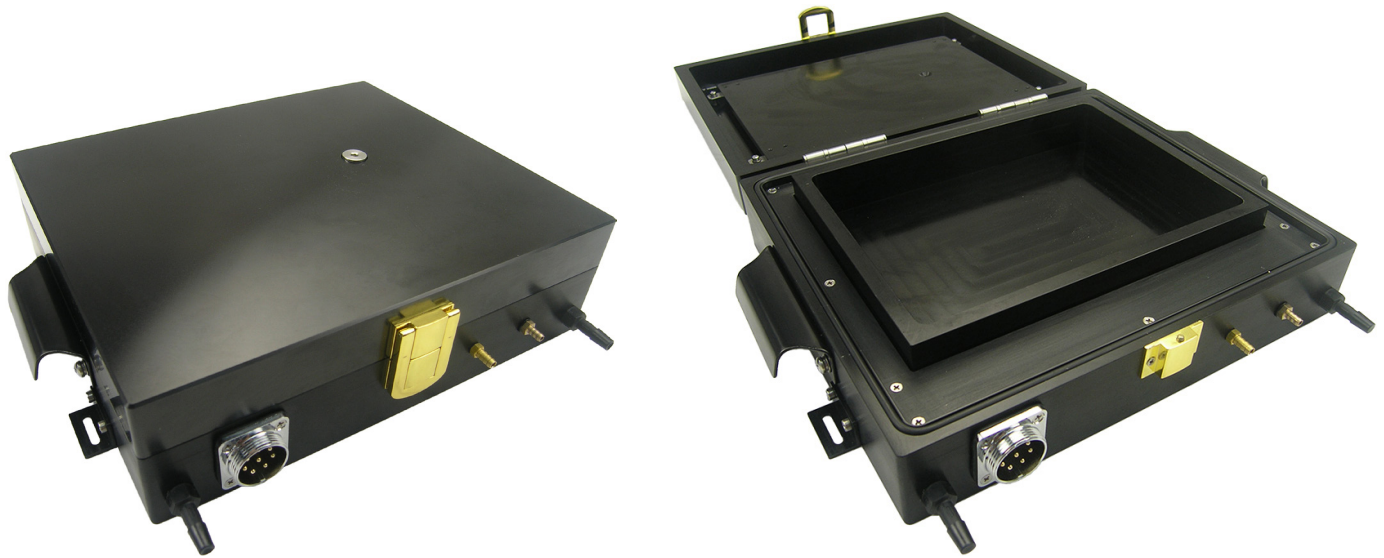
# INS1409047

## Thermal Incubation Chamber



Instec's Thermal Incubation Chamber is specially designed for incubation of biological samples, accommodating two standard (86 mm x 128 mm) well plates. This model uses thermoelectric heating and cooling along with preheated/precooled purge gas to provide fast temperature control within the sample area. The gas-tight chamber allows for atmospheric control, with gas inlet and outlet ports for purging with CO<sub>2</sub> or other gas. A feedthrough in the chamber lid can be used for an external sensor in order to monitor sample temperature.

The Thermal Incubation Chamber offers a robust set of features for biological research in a compact system.



Specialty Applications

## Features

- Programmable precision temperature from 0°C to 60°C (extended range available on request)
- Thermoelectric (Peltier) heating and cooling
- Controlled fast heating and cooling rate
- Gas tight sample chamber
- Gas inlet and outlet ports for purging the chamber with CO<sub>2</sub> or an inert gas
- Plug in chamber lid can be used as a feedthrough for an external temperature sensor
- Chamber holds two standard well plates

## Technical Specifications

Temperature Range	0°C to 60°C
Temperature Resolution	0.01°C
Temperature Stability	±0.05°C at 37°C
Minimum Heating and Cooling Rate	±0.5°C per hour
Maximum Heating Rate	30°C per minute at 25°C
Maximum Cooling Rate	-9°C per minute at 25°C
Temperature Control Method	Platinum RTD
Temperature Control Sensor	Switching PID
Chamber Size	187 x 138 x 28 mm

### Ordering Information

Part Number	Description
INS1409047-mK2000	INS1409047 thermal incubation chamber with mK2000, 115V/230V, software and frame cooling included

Please refer to Accessories section for mK2000 temperature controller options

### Physical Dimensions and Mechanical Drawings

