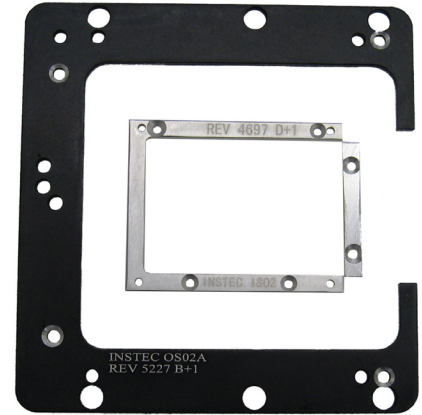


Spacer Kits

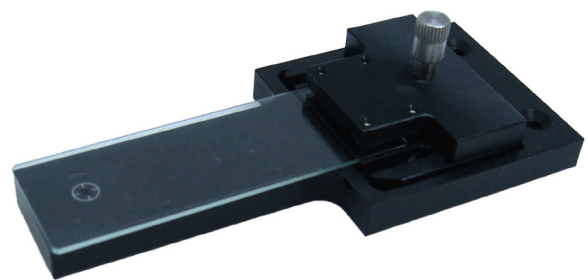
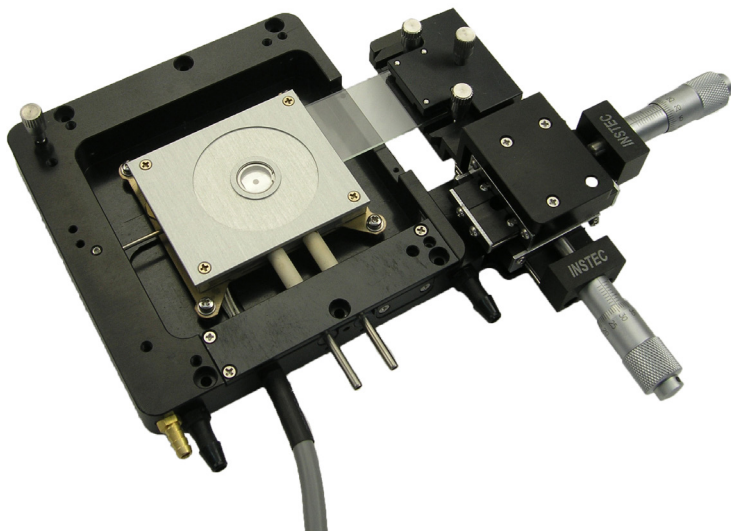
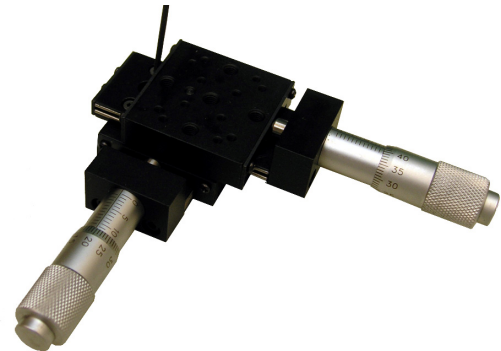
Instec offers spacers for most hot and cold stage and hot and cold plate models, which include an inner spacer, outer spacer, and inner skirt. The spacer allows for increasing the sample chamber height to accommodate a thick sample.

Spacers should be ordered together with liquid crystal cell holders and the RSH-S1 sample holder. Contact Instec for spacer options.



X-Y Sample Micropositioner

The transmitted light apertures of Instec hot and cold stages are typically kept relatively small in order to maximize temperature uniformity of the sample. Because of this, it is better to move the sample inside the hot and cold stage rather than the hot stage itself. Instec offers optional X-Y Micropositioners to extend the capability of any stage model that offers side sample loading. Micropositioners feature micrometer heads with 10 μm resolution and ± 5 mm of travel from the center position. A mounting adapter for Instec LC cell holders and glass microscope slides is included.



Instec's side loading stages come standard with a microscope slide holder, which can be used together with the X-Y Micropositioner. The side holder kit includes a tray marked with a guide for positioning the sample area to be in line with the stage's aperture.